

Maxwell HIDROCOOLERS BY WATER SHOWER quickly reduce the core temperature of fresh produce.



HIGH PERFORMANCE / LOW COST CONSUMPTION

- Capacity for 4 pallets loaded at an approximated height of 1.7 m.
- Food grade fiberglass reinforced polieser tank, thermally insulated and with a capacity of 3500 L.
- Manual valve for draining and cleaning the tank.
- Water level control system in the tank regulated by AISI 316 stainless steel float valve.
- Submerged AISI 316 stainless steel plate heat exchanger with 52 m2 exchange surface.
- Powder coated galvanized steel and AISI 316 stainless steel structure.
- Sandwich panel enclosure with all internal faces in stainless steel AISI 316.
- Electrowelded grating pallet bases with filters for solid impurities.
- 40 m3/h water pump with suction pre-filter.
- Great flow AISI 316 upper perforated tray showers and additional full cone nozzle lateral showers located in the 4 corners..
- Capacity of ice accumulation in the exchanger guaranteeing a water temperature in the tank close to 0°C.
- Air forced water agitation system in the tank increases convection and improves heat exchange.
- Integrated electrical panel.
- 4 pallets every 10 minutes.
- Cooling capacity: up to 2000 kg of cherries every 10 minutes.



Maxwell hydrocoolers are designed to achieve a very high performance and low energy consumption thanks to the ice accumulation; they are perfect for post-harvest cooling. Additional equipment and cooling specifications are chosen to meet your needs.



What is it for?

This equipment quickly reduces the core temperature of fresh produce, prolonging shelf life and preserving taste and appearance as well as reducing the cold rooms load and cooling time.

How does it work?

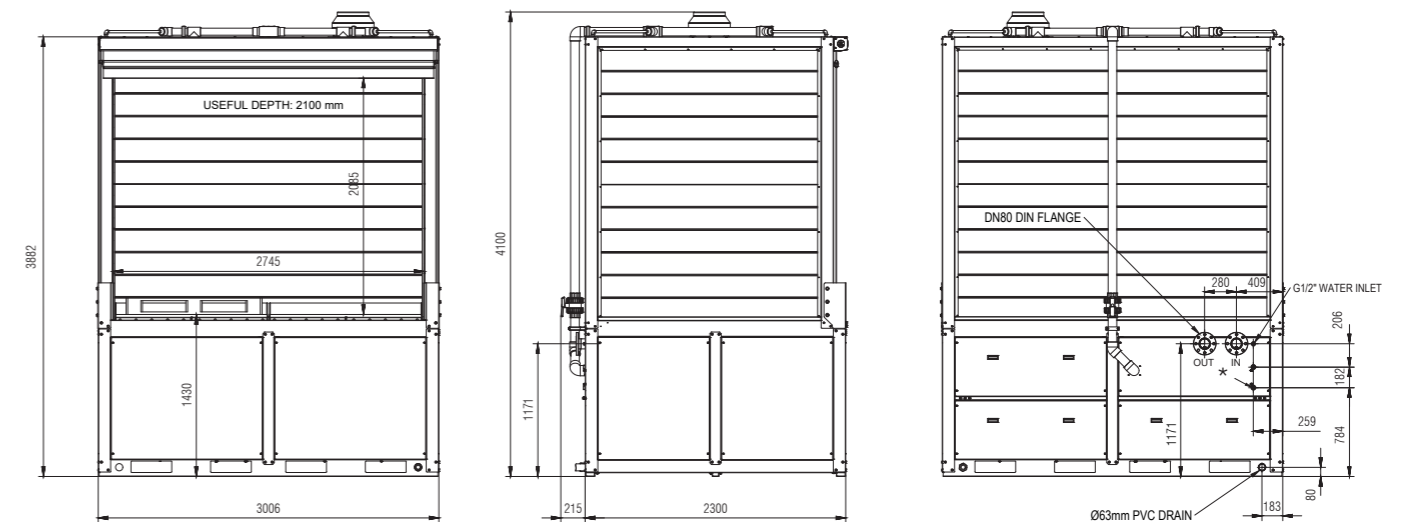
The system consists of a submerged stainless steel heat exchanger in a food grade thermally insulated water tank. The ice accumulation on the exchanger does not allow the water temperature to exceed 0,5°C. A shower system recirculates the chilled water over the pallets, flowing through the product and returning back to the tank.

Applications

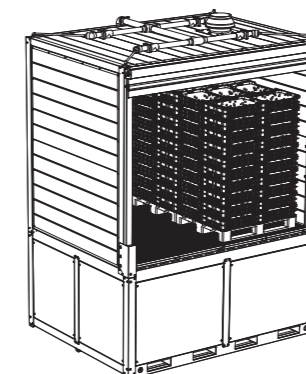
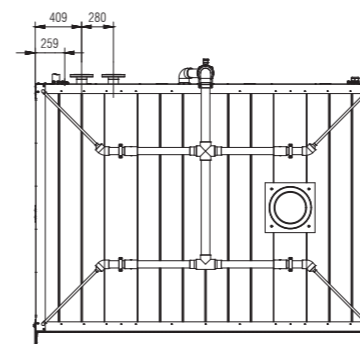


TECHNICAL DATA

TECHNICAL DATA	HC-4
Capacity	4 pallets 1,20m*1,00m*1,7m
Cooling fluid	Propylene glycol / Temper -20 / Ammonia
Refrigerant inlet temperature (°C)	-5
Voltage (V)	400
Phases	3
Frequency (Hz)	50
Maximum intensity (A)	16
Maximum flow rate of pumped water (m3/h)	40
Maximum stirring air flow rate (m3/h)	70
Cooling capacity (kW)	291
Maximum energy in ice storage (kWh)	140
Dimensions (L*W*H)	3006mm*2520mm*4100mm



* OPTIONAL SECONDARY WATER TO WATER HEAT EXCHANGER



-Load capacity: 4 pallets
-Pallet loading max height: 1,75m